



**REGIONAL SPECIALISED METEOROLOGICAL CENTRE-TROPICAL CYCLONES, NEW DELHI
TROPICAL WEATHER OUTLOOK**

DEMS-RSMC TROPICAL CYCLONES NEW DELHI DATED 30.07.2021

TROPICAL WEATHER OUTLOOK FOR NORTH INDIAN OCEAN (THE BAY OF BENGAL AND ARABIAN SEA) VALID FOR NEXT 120 HOURS ISSUED AT 0600 UTC OF 30.07.2021 BASED ON 0300 UTC OF 30.07.2021.

BAY OF BENGAL:

YESTERDAY'S, WELL MARKED LOW PRESSURE AREA OVER COASTAL BANGLADESH AND ADJOINING WEST BENGAL LAY OVER GANGETIC WEST BENGAL & ADJOINING JHARKHAND AT 0300UTC OF TODAY, THE 30TH JULY 2021. IT IS LIKELY TO MOVE WEST-NORTHWESTWARDS ACROSS SOUTH BIHAR AND SOUTHERN PARTS OF UTTAR PRADESH DURING NEXT 2-3 DAYS.

A FRESH LOW PRESSURE AREA FORMED OVER SOUTHERN PARTS OF CENTRAL UTTAR PRADESH.

CONVECTION ASSOCIATED WITH THE ABOVE WELL MARKED LOW PRESSURE AREA OVER GANGETIC WEST BENGAL & NEIGHBOURHOOD CENTERED WITHIN HALF A DEGREE OF 23.1N / 87.8E OVERLAND. ASSOCIATED BROKEN LOW AND MEDIUM CLOUDS WITH EMBEDDED INTENSE TO VERY INTENSE CONVECTION LAY OVER GANGETIC WEST BENGAL & NEIGHBOURHOOD. MINIMUM CLOUD TOP TEMPERATURE (CTT) IS MINUS 82 °C.

SCATTERED LOW AND MEDIUM CLOUDS WITH EMBEDDED INTENSE TO VERY INTENSE CONVECTION LAY OVER NORTH BAY OF BENGAL, WESTCENTRAL BAY OF BENGAL AND SOUTH ANDAMAN SEA. SCATTERED LOW AND MEDIUM CLOUDS WITH EMBEDDED MODERATE TO INTENSE CONVECTION LAY OVER SOUTHWEST BAY OF BENGAL OFF NORTH TAMIL NADU COAST.

PROBABILITY OF CYCLOGENESIS (FORMATION OF DEPRESSION) DURING NEXT 120 HRS):

24 HOURS	24-48 HOURS	48-72 HOURS	72-96 HOURS	96-120 HOURS
NIL	NIL	NIL	NIL	NIL

ARABIAN SEA:

SCATTERED LOW AND MEDIUM CLOUDS WITH EMBEDDED ISOLATED MODERATE TO INTENSE CONVECTION LAY OVER EASTCENTRAL ARABIAN SEA. SCATTERED LOW AND MEDIUM CLOUDS WITH EMBEDDED WEAK TO MODERATE CONVECTION LAY OVER REST OF ARABIAN SEA.

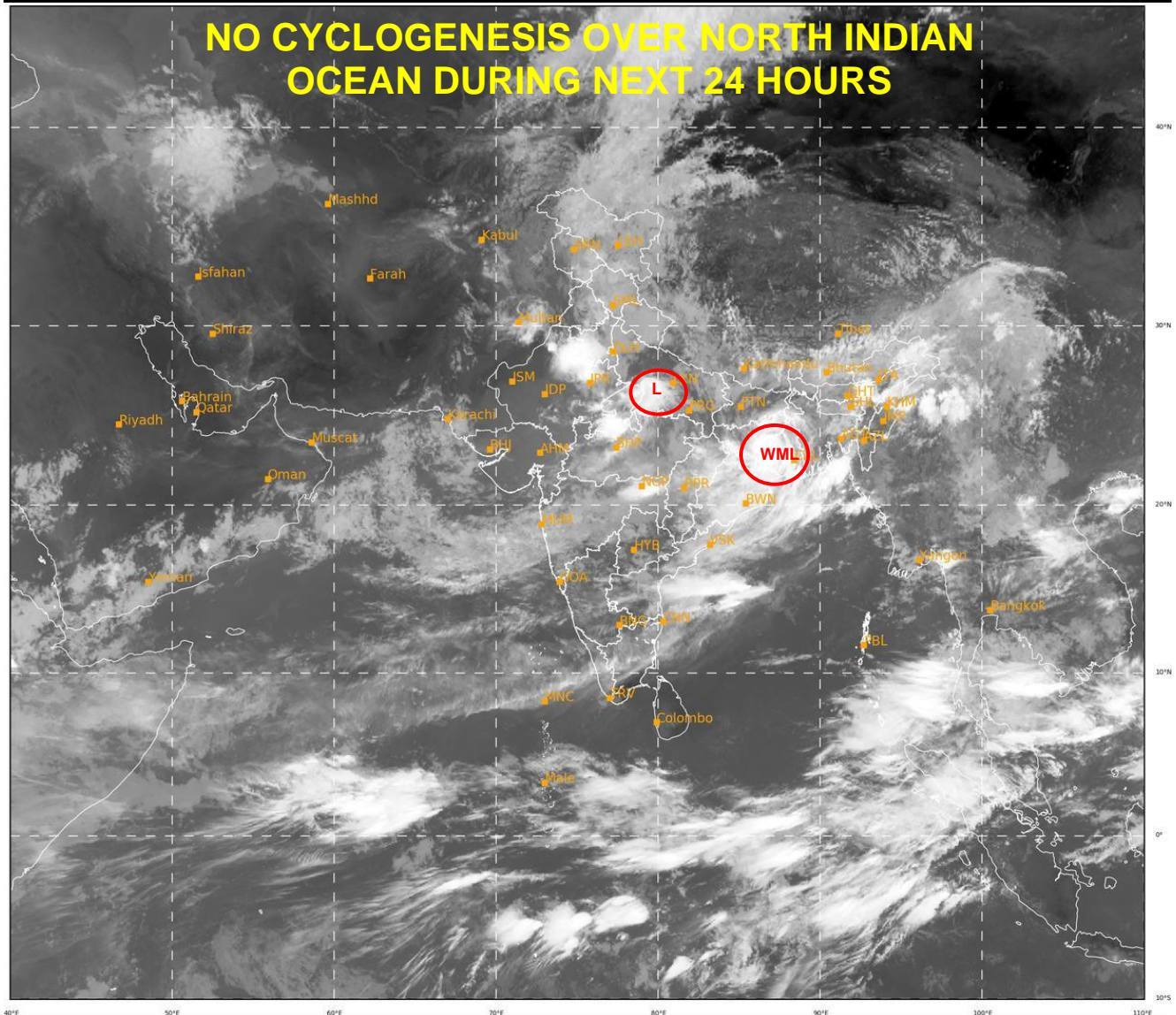
PROBABILITY OF CYCLOGENESIS (FORMATION OF DEPRESSION) DURING NEXT 120 HRS):

24 HOURS	24-48 HOURS	48-72 HOURS	72-96 HOURS	96-120 HOURS
NIL	NIL	NIL	NIL	NIL

REMARKS: NIL

SAT : INSAT-3D IMG
IMG_TIR1 10.8 um
L1C Mercator

30-07-2021/(0330 to 0357) GMT
30-07-2021/(0900 to 0927) IST



319

917

IMD,DELHI

- WML STANDS FOR WELL MARKED LOW PRESSURE AREA
- L STANDS FOR LOW PRESSURE AREA